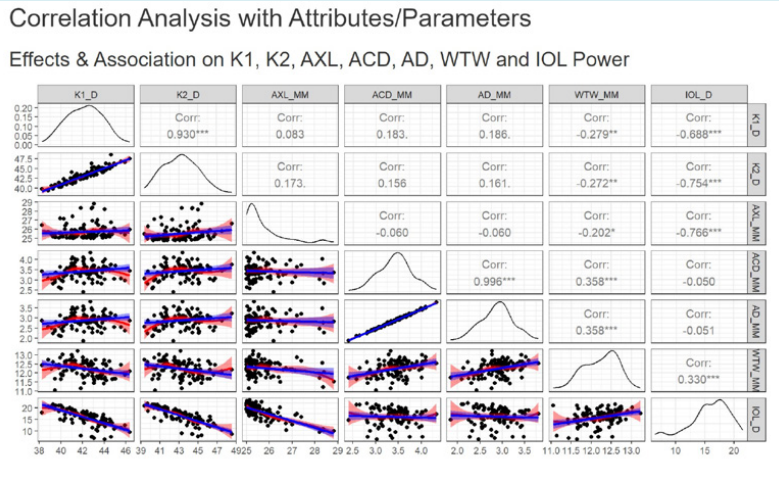
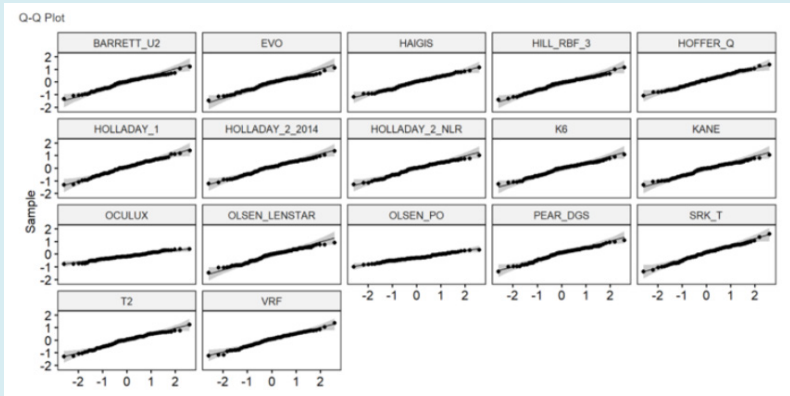




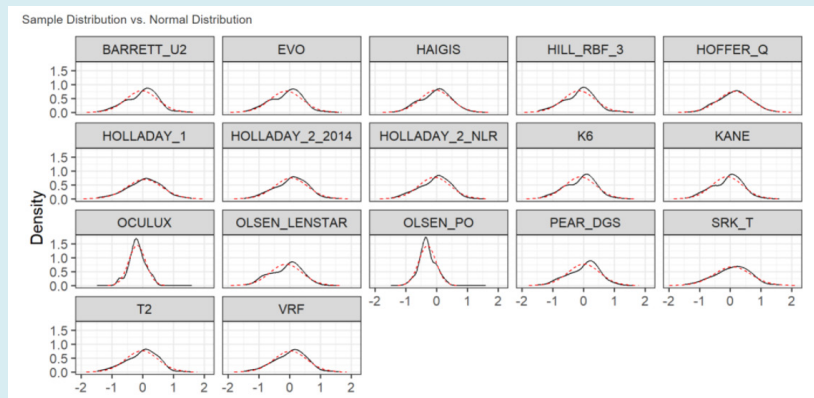
# Appendix



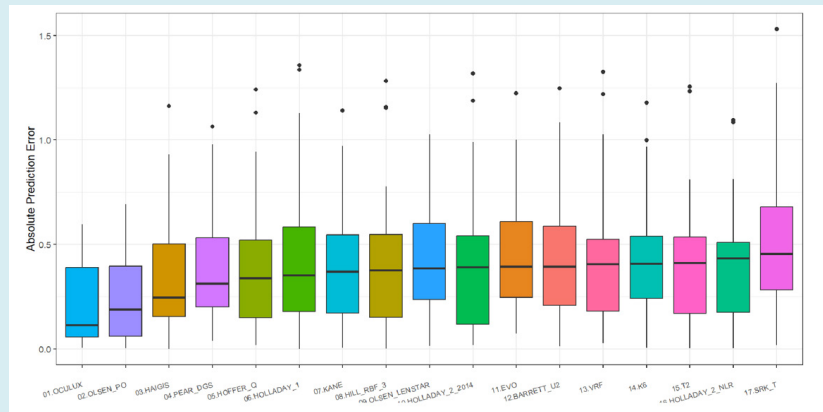
Supplementary Graph 1: Depicts the correlation between the different parameters used in this study.



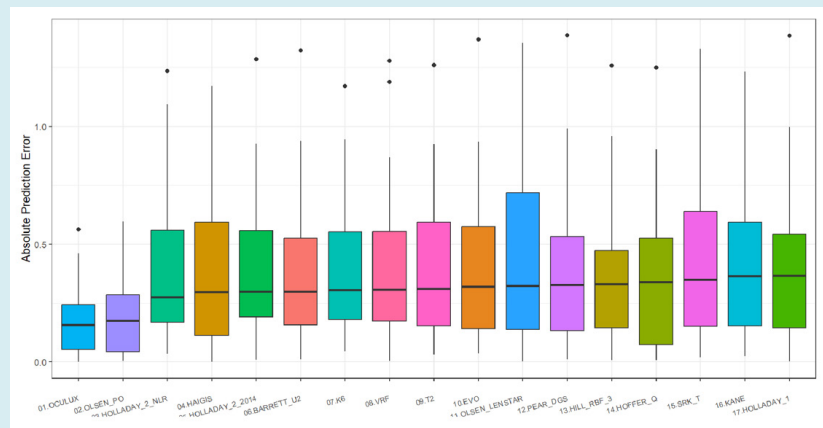
Supplementary Graph 2: Depicts the Shapiro-wilk test to demonstrate the normality of the data.



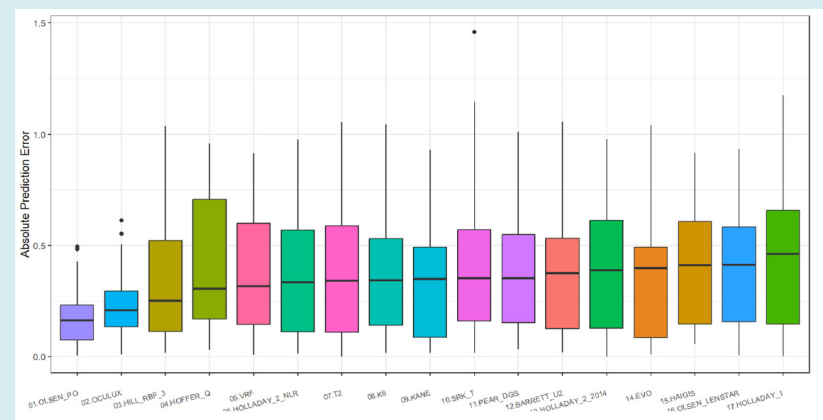
Supplementary Graph 3: Depicts the Q-Q plot to demonstrate the normality of the data.



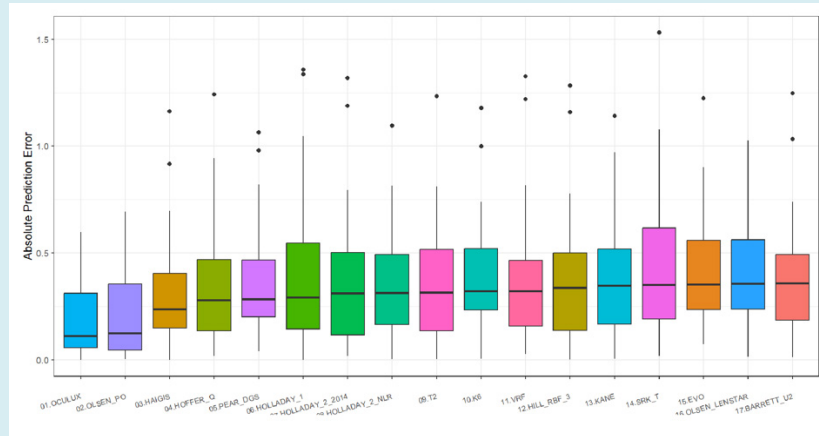
**Supplementary Graph 4:** Show the correlation between K1 and PE in the three-percentile group ( $\leq 33$ rd percentile, 33rd-66th percentile, and  $\geq 66$ th percentile respectively).



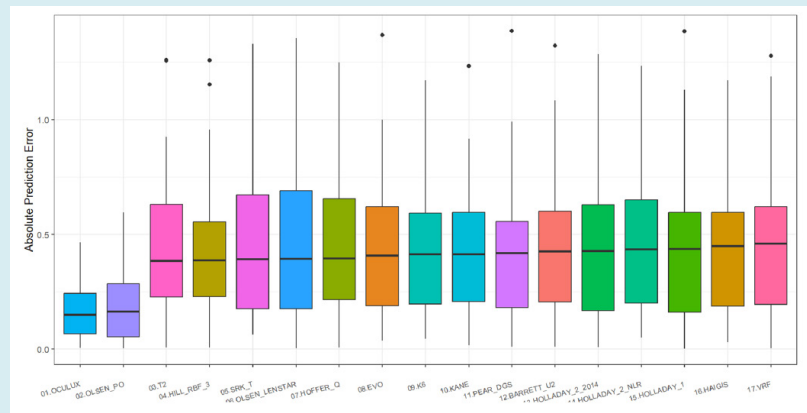
**Supplementary Graph 5:** Show the correlation between K1 and PE in the three-percentile group ( $\leq 33$ rd percentile, 33rd-66th percentile, and  $\geq 66$ th percentile respectively).



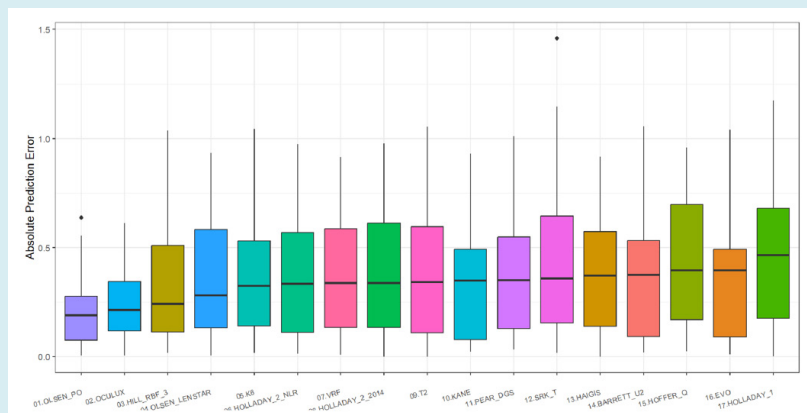
**Supplementary Graph 6:** Show the correlation between K1 and PE in the three-percentile group ( $\leq 33$ rd percentile, 33rd-66th percentile, and  $\geq 66$ th percentile respectively).



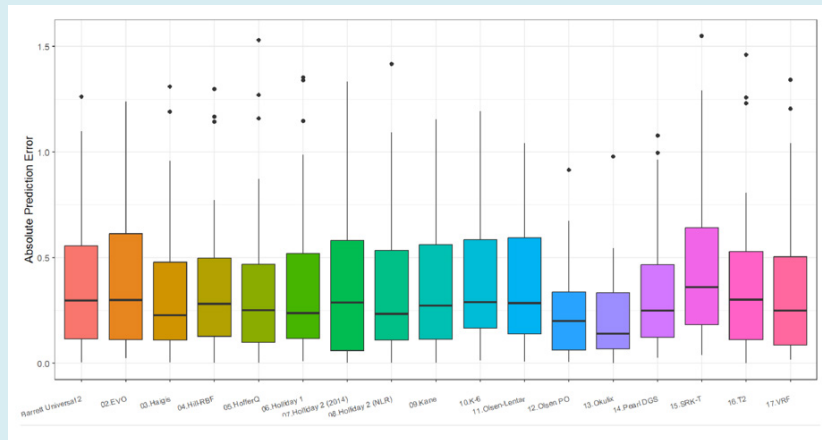
**Supplementary Graph 7:** Show the correlation between K2 and PE in the three-percentile group ( $\leq 33$ rd percentile, 33rd-66th percentile, and  $\geq 66$ th percentile respectively).



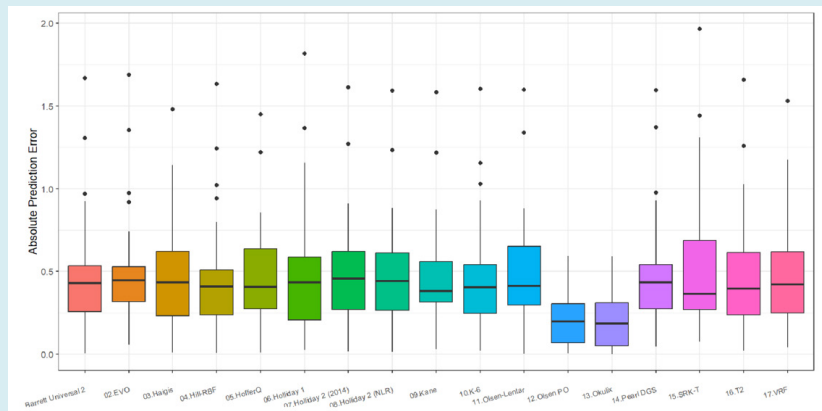
**Supplementary Graph 8:** Show the correlation between K2 and PE in the three-percentile group ( $\leq 33$ rd percentile, 33rd-66th percentile, and  $\geq 66$ th percentile respectively).



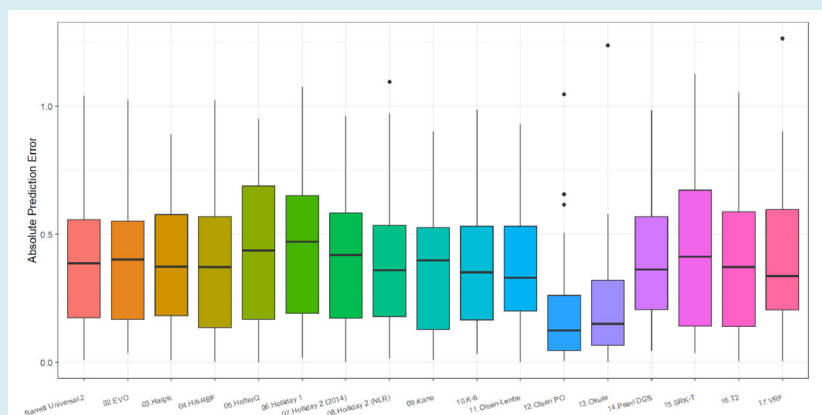
**Supplementary Graph 9:** Show the correlation between K2 and PE in the three-percentile group ( $\leq 33$ rd percentile, 33rd-66th percentile, and  $\geq 66$ th percentile respectively).



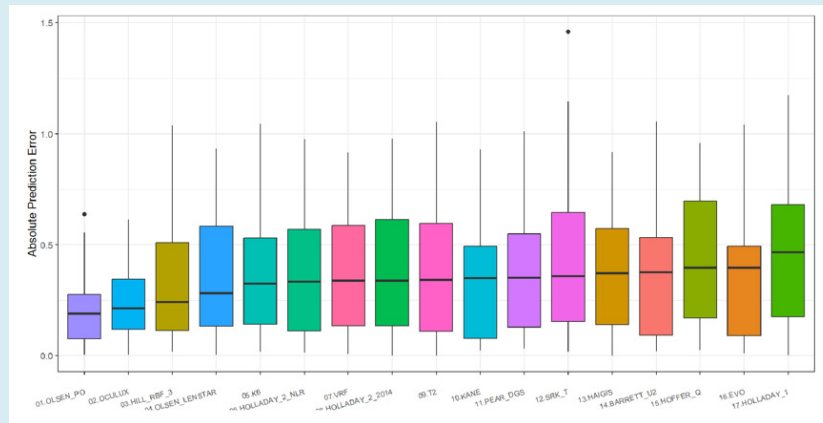
**Supplementary Graph 10:** Show the correlation between AXL and PE in the three-percentile group ( $\leq 33$ rd percentile, 33rd-66th percentile, and  $\geq 66$ th percentile respectively).



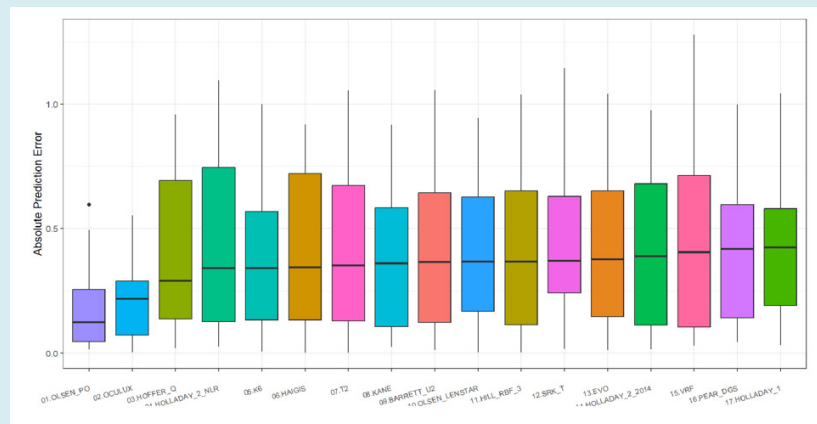
**Supplementary Graph 11:** Show the correlation between AXL and PE in the three-percentile group ( $\leq 33$ rd percentile, 33rd-66th percentile, and  $\geq 66$ th percentile respectively).



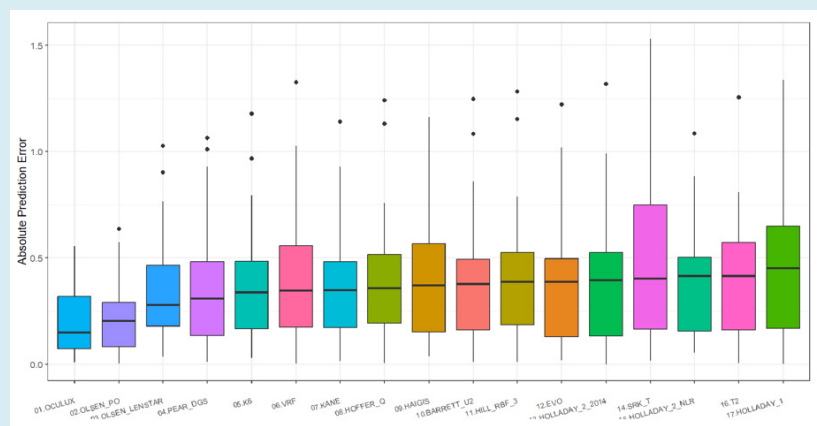
**Supplementary Graph 12:** Show the correlation between AXL and PE in the three-percentile group ( $\leq 33$ rd percentile, 33rd-66th percentile, and  $\geq 66$ th percentile respectively).



**Supplementary Graph 13:** Show the correlation between ACD and PE in the three-percentile group ( $\leq 33$ rd percentile, 33rd-66th percentile, and  $\geq 66$ th percentile respectively).



**Supplementary Graph 14:** Show the correlation between ACD and PE in the three-percentile group ( $\leq 33$ rd percentile, 33rd-66th percentile, and  $\geq 66$ th percentile respectively).



**Supplementary Graph 15:** Show the correlation between ACD and PE in the three-percentile group ( $\leq 33$ rd percentile, 33rd-66th percentile, and  $\geq 66$ th percentile respectively).